



© Colourbox.com

# In-Semester German Language Courses

Everyday language and  
special topic courses

---

International Office  
of the University of Bonn



## Our courses

Our in-semester German language courses take an interactive and practical approach to oral and written language acquisition, allowing groups of no more than 18 international participants to master everyday situations in German. Participants also practice written and oral comprehension, expand their vocabulary and learn the theory and application of grammatical structures.

**Target group:** Enrolled international students who do not need to show proof of having passed a German language examination (e.g. DSH or TestDaF). Courses can also be attended by doctoral students, visiting academics and member of staff.

## Course duration, format and location

**Course duration:**

12 weeks

**Course format:**

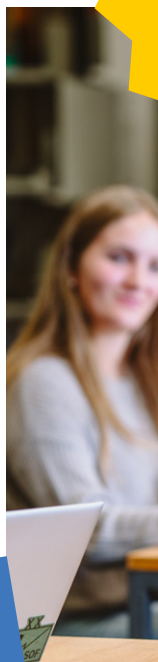
Hybrid (attendance in person and via Zoom) or online. Participation in person only is dependent on the number of participants.

**Location:**

center of the city  
(Adenauerallee 10)  
and via Zoom if applicable

**Current courses and further information:**

[uni-bonn.de/in-semester-german-language-courses](https://uni-bonn.de/in-semester-german-language-courses)



## **Everyday German language courses A1.1 to B2.2 level**

You can learn everyday German at the level that is right for you and will soon be able to communicate.

## **Special topic courses A2 to C1 level**

The content and language of the special topic courses focus on specific themes from German life, history and culture. They can also focus on training various skills.


### **TOPICS-HIGHLIGHTS**

**German and Art**

**Sustainability:  
A Dialogue about  
the Future**

**German for  
Professionals**





## **Additional services: Language learning support**

The Language learning support staff at the International Office provide help and advice to students seeking to work independently to learn German. Together, we draw up tailor-made learning strategies.

Make an appointment.

Email: [daf-sprachlernberatung@uni-bonn.de](mailto:daf-sprachlernberatung@uni-bonn.de)



---

### **International Office German as a Foreign Language**

Poppelsdorfer Allee 102, 53115 Bonn (Germany)  
Phone: +49 228 73-7708

Email: [deutsch-lernen@uni-bonn.de](mailto:deutsch-lernen@uni-bonn.de)  
[uni-bonn.de/learning-german](http://uni-bonn.de/learning-german)

Office hours:  
Tuesday and Thursday: 10:00 am–12:00 pm  
Thursday: 01:30 pm–03:00 pm

